

## *Dory Language*



---

### B

#### **Bailer:**

wooden and metal scoop used to toss water out of the dory.



### D

#### **Dory anchor and float-marker:**

small version of iron ship anchor secures one end of baited trawl line to the bottom; the other end is attached to floating numbered wooden barrel with flag.



#### **Dory:**

a small, flat-bottomed boat used for fishing from a larger vessel in the open ocean; noted for stability and ability to carry heavy loads of fish; can be rowed or sailed.



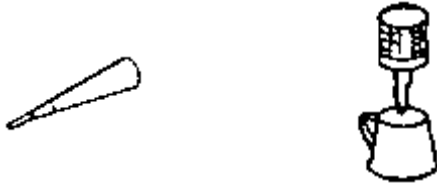
**Doryman:**

one of the two men fishing in a dory.

**F**

**Fog horn and kerosene lamp:**

used to signal the schooner (by sound or light) in thick fog or darkness.



**G**

**Gob stick:**

heavy two-pronged wooden stick used to stun fish and to remove hooks from their throats.



**Gurdy:**

a hand-crank which fits across the bow; used to haul in lines heavy with fish.



**H**

**Halibut killer:**

heavy wooden club used to stun or kill large fish, like halibut, which can weigh over 200 pounds.



**N**

**Nippers:**

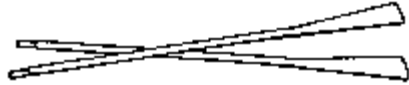
doughnut-shaped items to protect fisherman's fingers from running trawl lines.



## O

### **Oars:**

wooden poles with broad blades rowed by hand to propel a small boat.



## P

### **Pay out:**

to slack away (to let out) a line that has been secured on board.

### **Pen boards:**

flat pieces of wood used to section out parts of the dory to hold fish.



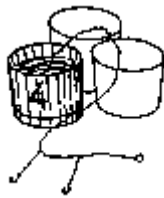
## T

### **Tholepins:**

narrow wooden pegs that fit into the top rail of a dory and hold the oars in place while rowing.

### **Trawl:**

a buoyed line holding many shorter lines with baited hooks.



### **Trawl-tub:**

half-barrel used to hold coiled trawl line and hooks.